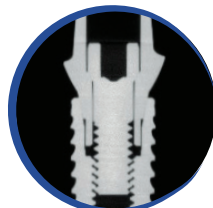




Natural Smiles^{ALL}

 notchimplant.com

Excellent Performance in Implant Dentistry



Internal Conical Connection

Precise connection design minimizes the load to the center and the screw and offers seamless 'cold weld friction' interface preventing microleaks.

The hexagonal interlocking at the base of the connection provides secure positioning of abutments.



UNIQUE IMPLANT

With a rather conventional macroshape UNIQUE Implant is one-implant-to-go for all indications. The tapered form gradually compresses the underprepared osteotomy in loose bone whereas it fits nicely in regular osteotomy in harder bones. Easy drilling and surgical protocol makes it a user friendly implant with successful clinical results.



	NP		RP		
	Ø3.3 mm	Ø3.75 mm	Ø4.2 mm	Ø4.7 mm	Ø5.3 mm
8 mm	123308N	123708N	124208R	124708R	125308R
10 mm	123310N	123710N	124210R	124710R	125310R
11.5 mm	123311N	123711N	124211R	124711R	125311R
13 mm	123313N	123713N	124213R	124713R	125313R
16 mm	123316N	123716N	124216R	124716R	125316R

SMART IMPLANT

SMART Implant is the optimal solution for immediate implantation and immediate loading. Implant body and thread design condense bone during insertion, providing high primary stability particularly in compromised bone. The apex and body structure is fully compatible with the step burs in the surgical kit.



	NP		RP		
	Ø3.3 mm	Ø3.75 mm	Ø4.2 mm	Ø4.7 mm	Ø5.3 mm
8 mm	113308N	113708N	114208R	114708R	115308R
10 mm	113310N	113710N	114210R	114710R	115310R
11.5 mm	113311N	113711N	114211R	114711R	115311R
13 mm	113313N	113713N	114213R	114713R	115313R
16 mm	113316N	113716N	114216R	114716R	115316R

SHORT IMPLANT

SHORT Implant features an aggressive thread profile and a tapered body and designed particularly for the cases where inadequate bone is present.

Short 6 mm rough surface length allows clinicians to avoid vital structures with confidence therefore eliminates the need for grafting procedures that are complicated and slow to heal.

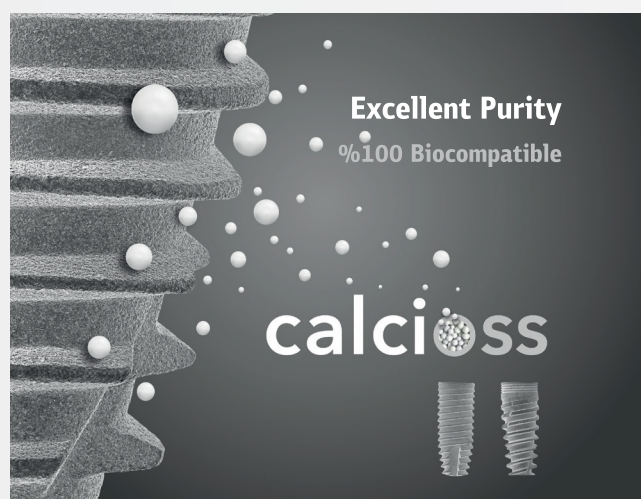
1.4 mm transgingival part makes it easier-to-use in posterior region.



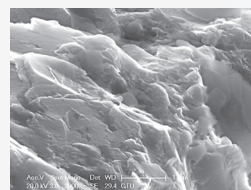
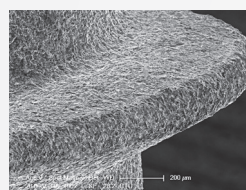
	NP		RP		
	Ø3.75 mm	Ø4.2 mm	Ø4.7 mm	Ø5.3 mm	
6 mm	133760N	134260R	134760R	135360R	

COVER SCREW

	NP	RP
	203358N	203858R



CalciOSS surface treatment enhances the surface topography for faster osteoblast proliferation.

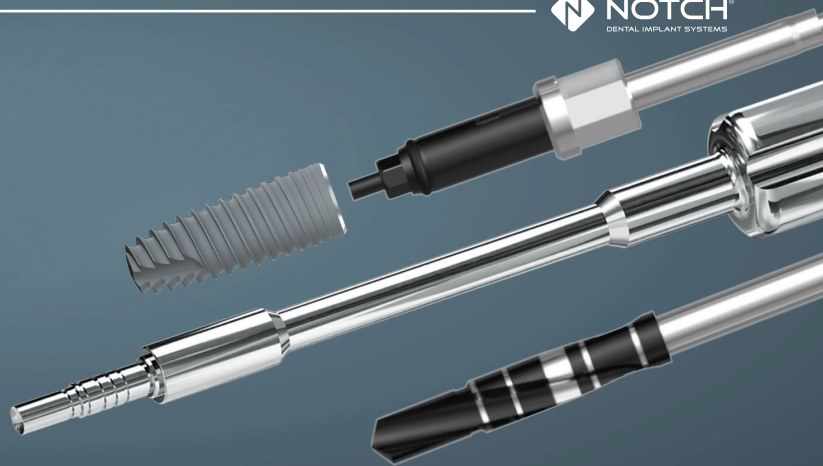


For **CalciOSS** surface treatment Calcium Phosphate bioceramics, consists of hydroxyapatite (HA) and β -TCP (beta-tricalcium phosphate), is used.

Surgical overview

ONE_{ALL} SURGICAL KIT

All implants in the NOTCH Implant System can be placed with the same surgical kit.



EASY-TO-NAVIGATE LAYOUT

Sectioned layout of Surgical Kit provides access to the right tool at a glimpse during the surgery.

REGENERATION

Cortical Drills For Hard Bone

ØD (mm)	Ref. No
Ø3.75	543700C
Ø4.2	544200C
Ø4.7	544700C
Ø5.3	545300C

Parallel Pin/Depth Guide/ Osteo-pin

ØD (mm)	Ref. No
Ø2.0	522020P
Ø3.3	523300P
Ø3.75	523700P
Ø4.2	524200P
Ø4.7	524700P
Ø5.3	525300P

DRIVE

Torque Wrench Ratchet
561000T

Ratchet Adapter
554018A

Implant Driver

Platform	Ref. No
NP (S)	552228I
RP (S)	552628I
NP (L)	552237I
RP (L)	552637I

Screw Driver (Hex. 1.25 mm)

	Ref. No
Short	550010S
Long	550020S

SURGERY

Marker Drill
511818D

Stopper Pilot Drills Ø2.0 mm

Lenght	Ref. No
L: 6 mm	512006D
L: 8 mm	512008D
L: 10 mm	512010D
L: 11.5 mm	512011D
L: 13 mm	512013D
L: 16 mm	512016D

Twist Drills

ØD (mm)	Ref. No
Ø2.4/2.8	512428D
Ø2.8/3.2	512832D
Ø3.2/3.6	523236D
Ø3.6/4.0	523640D
Ø4.0/4.5	524045D
Ø4.5/5.0	524550D



Versatile Osteo-pin Design

Parallel Pins + Depth Guide + Sinus Lifting Concave

REGENERATION section is added to allow you handle 2 often needed bone regeneration procedures:

- 1) Grafting
- 2) Osteotomy

"Osteo Parallel Pins" are used as direction indicator and depth gauge.

When combined with "handle" in the lower tray an easy osteotome kit is at hand.

* Concave type! recommended for lifting



Prosthetics

& Temporary Abutment

SIMPLIFIED YET WIDE RANGE OF PROSTHETICS PROVIDES FLEXIBILITY FOR ALL CLINICAL NEEDS



IMPRESSION COPING (Open Tray)

Open tray impression coping is used in cases where multiple implants placed with deviation therefore higher precision is needed. Sharp flanks provide strong grip in impression material.

Implant Level Open Tray	NP	RP
Ø3.6 mm	313600N	-
Ø4.5 mm	314500N	-
Ø5 mm	-	315000R
Ø6 mm	-	316000R



IMPRESSION COPING (Closed Tray)

Closed tray impression coping is used in cases where parallelism is maintained. Smooth contours prevent tears in impression material and provides click-in sitting.

Implant Level Closed Tray	NP	RP
Ø3.6 mm	303600N	-
Ø4.5 mm	304500N	-
Ø5 mm	-	305000R
Ø6 mm	-	306000R



ANALOG

For conventional impression methods an analog is used to replicate implant position in stone model.

	NP	RP
Implant Analog	321000N	321001R



ABUTMENT SCREW

Abutment screws are supplied in abutment packages.

	NP	RP
Abutment Screw	341610U	342010U



HEALING ABUTMENT

NOTCH Implant System offers plenty of healing abutments to cover the large range of clinical situations to create the emergency profile of the gingival tissue during healing.

▼ØDia	NP			RP		
	3 mm	5 mm	7 mm	3 mm	5 mm	7 mm
Ø3.6 mm	213630N	213650N	213670N	-	-	-
Ø4.5 mm	214530N	214550N	214570N	-	-	-
Ø5 mm	-	-	-	215030R	215050R	215070R
Ø6 mm	-	-	-	216030R	216050R	216070R



IMMEDIATE TEMPORARY ABUTMENT

is a good option when immediate provisionalization is required. Its sleek post design allows dentist finish case chairside within minutes. *Chairside*

	NP		RP	
►Gingiva Height	1.5 mm	3.0 mm	1.5 mm	3.0 mm
	270115N	270130N	270115R	270130R



TEMPORARY ABUTMENT ENGAGING

is used for single-tooth immediate provisionalization. Deep and sharp grooves provide strong retention. *Chairside/Dental Lab*

	NP		RP	
►Gingiva Height	1.5 mm	3.0 mm	1.5 mm	3.0 mm
	270215N	-	270215R	270230R



TEMPORARY ABUTMENT NON-ENGAGING

is used for multiple-tooth immediate provisionalization. Deep and sharp grooves provide strong retention. *Chairside/Dental Lab*

	NP	RP
►Gingiva Height	1.5 mm	3.0 mm
	270315N	270315R

Cement Restoration



Prosthetic line contains all components to cover indications from single-unit to full-arch restorations. NOTCH supplies a comprehensive line for common protocols like cement retained, overdenture, screw retained restorations.

▼ØDia	►Gingiva Height	NP			RP		
		1.5 mm	3.0 mm	4.5 mm	1.5 mm	3.0 mm	4.5 mm
Ø4.5 mm		224515N	224530N	224545N	224515R	224530R	224545R
Ø5.5 mm		-	-	-	225515R	225530R	225545R
Ø6 mm		-	-	-	226015R	226030R	226045R

▼ØDia	►Gingiva Height	NP			RP		
		1.5 mm	3.0 mm	4.5 mm	1.5 mm	3.0 mm	4.5 mm
Ø4.5 mm		230015N	230030N	230045N	230015R	230030R	230045R
Ø5.5 mm		-	-	-	230115R	230130R	230145R

►Gingiva Height	NP			RP		
	1.5 mm	3.0 mm	4.5 mm	1.5 mm	3.0 mm	4.5 mm
15°	231515N	231530N	231545N	231515R	231530R	231545R
25°	232515N	232530N	232545N	232515R	232530R	232545R

DUAL ABUTMENT

Dual Abutment is used for both single and multiple unit cement-retained restorations. With the easy snap-on impression coping dual abutment offers both conventional and digital impression.



ESTHETIC ABUTMENT

Esthetic Abutments have a special design that replicates the anatomic contour of a natural tooth and gum line. With wide variety of dimeters and gingival height, the esthetic abutment line is time saving for prosthodontist and technician to ensure more esthetical outcomes compared to conventional stock abutments.

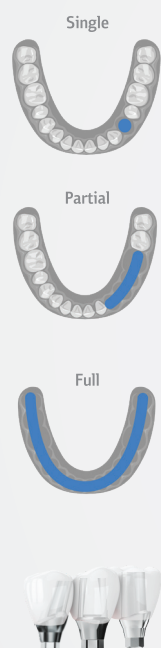


ANGLED ESTHETIC ABUTMENT

Angled Esthetic Abutments are available in 15 and 25 degrees and varying diameters/ gingival heights .



Restorational Options

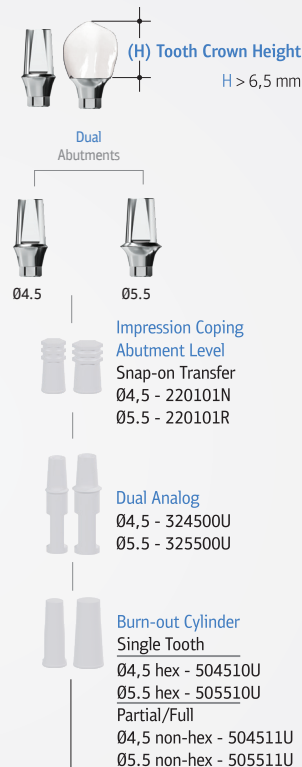


Cement Restoration

Abutment Preparation



Without Preparation



Crown Screw Access Hole Screw Retained

Overdenture Restorations

For precise and durable overdentures NOTCH Implant has a variety of options from conventional ball and locator abutments to innovative multi-loc coping.



BALL ABUTMENT

is used for implant-retained overdentures particularly in atrofied jaws. As long as parallelism is maintained ball abutments offer an easy overdenture solution.

Gingiva Height	NP	RP
1.0 mm	240010N	240010R
2.0 mm	240020N	240020R
3.0 mm	240030N	240030R
4.0 mm	240040N	240040R
5.0 mm	240050N	240050R
6.0 mm	240060N	240060R



LOCATOR ABUTMENT

is used for implant-retained overdentures. Smaller vertical dimension and flat seating make LOCATOR an ideal solution for the cases with esthetic demands.

LOCATOR is an ideal solution for the cases where parallelism is compromised.

Gingiva Height	NP	RP
1.0 mm	250010N	250010R
2.0 mm	250020N	250020R
3.0 mm	250030N	250030R
4.0 mm	250040N	250040R
5.0 mm	250050N	250050R
6.0 mm	250060N	250060R



MULTI-LOC 17° OVERDENTURE

This innovative component equips dentists with two options with the cases requiring tilted implants.

Gingiva Height	NP	RP
2.7 mm	261727N	261727R
3.5 mm	261735N	261735R



MULTI-LOC 30° OVERDENTURE

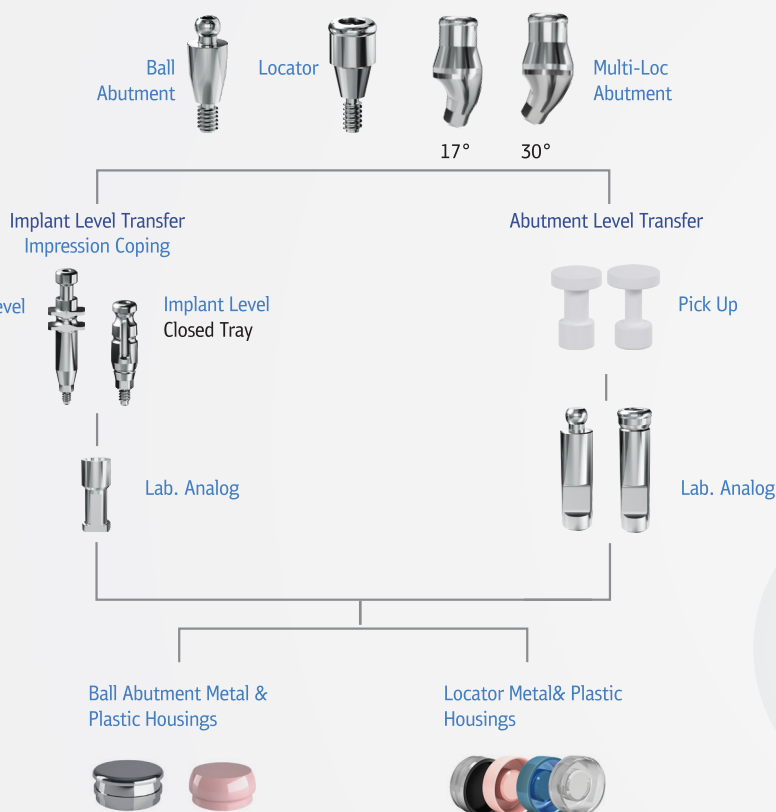
Multi-loc is used to have screw abutment supported overdenture or to switch to overdenture from fixed bridge.

Gingiva Height	NP	RP
3,5 mm	263035N	263035R

Restorational Options



Overdenture Prosthetics	
Ball Abutment Pick Up	331006U
Ball Abutment Analog	321003N
Ball Abutment Metal Housing	
Ball Abutment Plastic Housing	
Locator Pick Up	331007U
Locator Analog	321005N
Multi-Loc Coping	331030U
Multi-Loc Screw	341410U
Locator Metal Housing	
Locator Plastic Housing	



MULTI-LOC 17°/30°



Screw Retained Restorations

Screw-retained restoration allows simple and easy removal and maintenance of prosthesis during routine checkups, with minimum risk of damaging the restoration. Screw abutment product line supports various options from a single tooth restoration, to partially or fully edentulous cases.

Height	NP	RP
1.5 mm	260015N	260015R
2.5 mm	260025N	260025R
3.5 mm	260035N	260035R
4.5 mm	-	260045R

SCREW ABUTMENT

is used for screw retained prosthesis of single tooth, bridges and bars.



	NP			RP		
	2.7 mm	3.5 mm	4.0 mm	2.7 mm	3.5 mm	4.0 mm
17°	261727N	261735N	-	261727R	261735R	-
30°	-	263035N	263040N	-	263035R	263040R

ANGLED SCREW ABUTMENT

allows to place tilted implants to avoid anatomically compromised parts in upper and lower jaw. Seamless round contour ensures easier fitting into the implant when compared conventional designs.

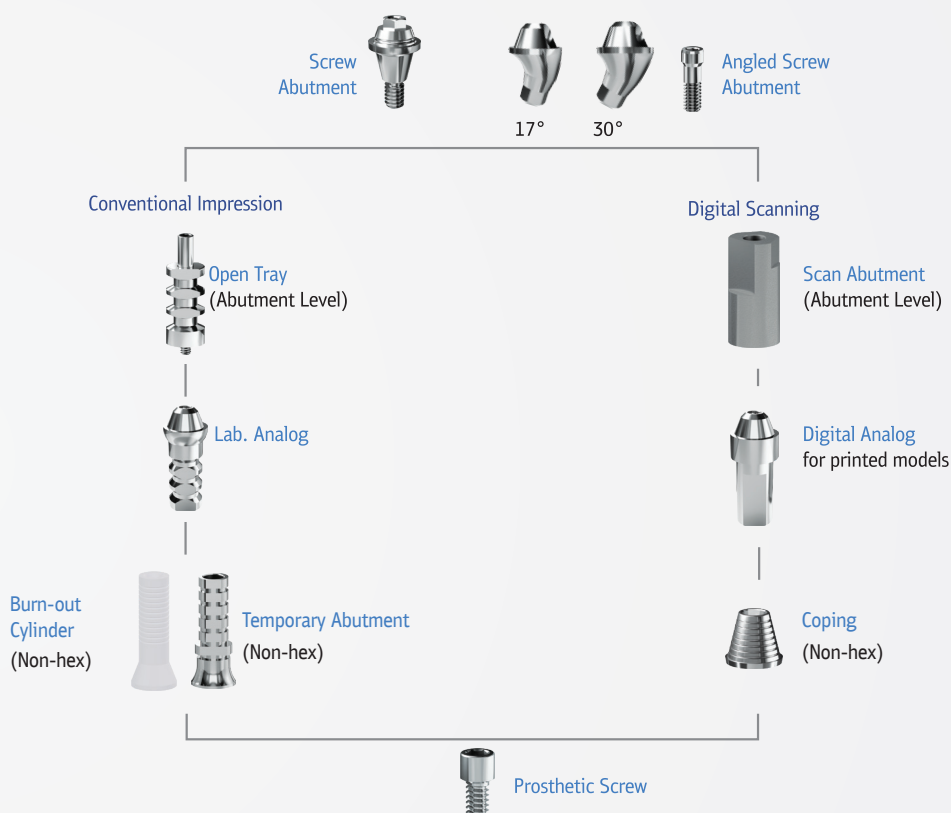
Angled Screw Abutments are available in 17° and 30° for bridging wide divergences between implants placed tilted in anatomically compromised sites.



17°



30°



Restorational Options



Screw Abutment Prosthetics	NP	RP
Angled Abutment Screw	341611U	342011U
Prosthetic Screw	341410U	
Impression Coping Open Tray	331001U	
Lab. Analog	321002U	
Burn-out Cylinder (Non-hex)	505811U	
Temporary Abutment (Non-hex)	270330N	
Scan Abutment	400030U	
Digital Analog	321009U	
Coping (Non hex)	428000U	

Digital CAD/CAM Restorations



SCAN ABUTMENT

FOR IMPLANT LEVEL DIGITAL IMPRESSION

Digital scanbody and analog are used to make CAD/CAM restorations.

NP	RP
400010N	400020R



DIGITAL ANALOG

FOR PRINTED MODELS

NP	RP
321007N	321008R



TI-BASE ENGAGED (SINGLE TOOTH)

is used for single tooth temporary or final restorations. Retentive micro grooves on post provides better attachment to crown.

Gingiva Height	NP	RP
	Ø4	Ø4,5
H: 0.7 mm	420710N	420710R
H: 2.5 mm	422510N	422510R



TI-BASE NON-ENGAGED (BRIDGES/BARS)

is used for multiple tooth temporary or final restorations. Retentive micro grooves on post provides better attachment to crown.

Gingiva Height	NP	RP
	Ø4	Ø4,5
H: 0.7 mm	420700N	420700R
H: 2.5 mm	422500N	422500R



PREMILL ABUTMENT

Customized abutments has major advantages over stock abutments where esthetics is prerequisite. With premilled hexagonal and conical part genuine premill abutments offer better and safer outcomes.

Diameter (mm)	NP	RP
10 mm	411010N	411020R



NOTCH IMPLANT GmbH
Zum Schnüffel 6
58540 Meinerzhagen
Germany

+49 (0) 1705 950-966
+49 (0) 1705 909-363

info@implant.com

notchimplant.com

